

# Download Program V1.20 Operation Manual

## ■ Overview

This program is an application program to download the firmware to JCM products.

### ◆ Applicable JCM Products

- DBV-200
- DBV-30X
- WBA-1Mb
- WBA-4Mb
- UBA-10/11

### ◆ Applicable OS

Windows 98, 2000, XP

## ■ Operation Procedure

### 1. Install the download program

Unzip two files (Download Program Ver.1.20. exe and wba\_download\_config.txt) from the zip file and copy those files to your PC. \*

\* You can save the files in any folder. However, two files must be saved in the same folder.

### 2. Download the file to the Flash Memory

The following download procedures explain WBA as an example. For other models, refer to the "Setting List".

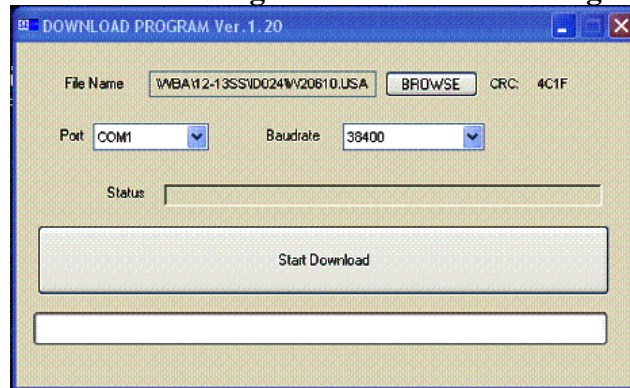
### ◆Setting Lists

Model	Baud Rate (kbps)	DIP Switch (ON)
DBV-200	38.4	Bank1: 2, Bank2: 1 ~ 6
DBV-30X	38.4	Bank1: 1,6,7,8
WBA-1Mb	19.2	6,7,8
WBA-4Mb	38.4	1,6,7,8
UBA-10/11	38.4	1,6,7,8

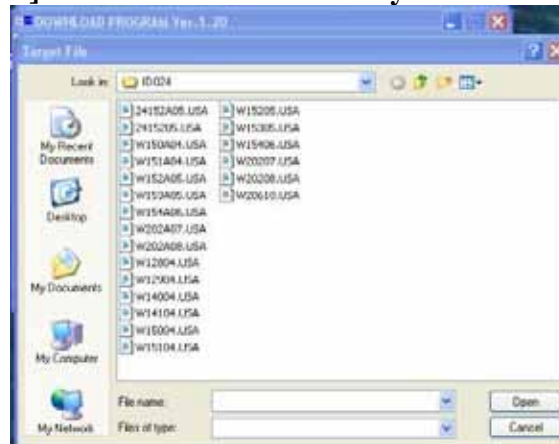
- 1) Set the WBA unit's DIP Switches No.1, 6, 7 and 8 ON.
- 2) Connect the power supply unit (Ex. PS15-006) with built-in RS232C with WBA, and connect WBA with PC. And then, turn on the power supply.

# Download Program V1.20 Operation Manual

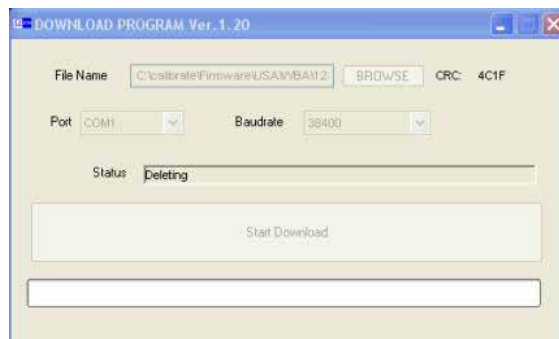
- 3) **Double-click the Download Program. Then the following window will appear.**



- 4) **Click the [Browse] button and select the file you want to download.**



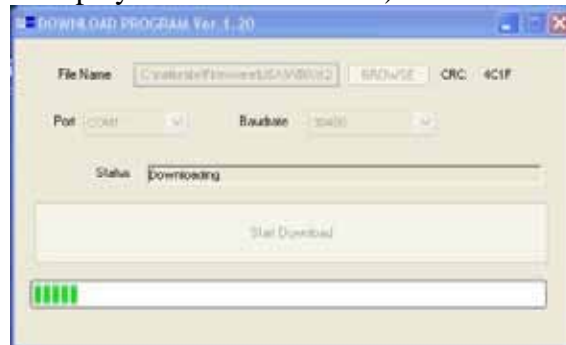
- 5) **Check the COM Port and Baud Rate setting.**  
(Ex. WBA DIP switches No.1, 6, 7 and 8 is ON = 38.4 kbps).
- 6) **Click the [Start Download] button to start downloading.**  
(Status 1) Delete the files in the Flash Memory.  
(“Deleting” is displayed in the Status bar)



# Download Program V1.20

## Operation Manual

(Status 2) The progress report is displayed in the progress bar while downloading.  
("Downloading" is displayed in the Status bar.)



- 7) When downloading is successfully completed, the following pop up windows will be displayed. Click [OK] button and close the Download Program.

